

# APARTMENT SPECIFICATIONS

# SPRINGFIELDS

	Kitchen options	Description
Finish 1	Units	Wall - Symphony Plaza Cobble Grey / Base - Symphony Plaza Porcelain
	Worktop	40mm Square Edged Worktop in Alpine White
	Flooring	Tarkett Safetred Traditional Oak Grey White
	Tiling	Johnsons Savoy Steel 300x100mm
Finish 2	Units	Wall - Symphony Plaza Cashmere / Base - Symphony Plaza Porcelain
	Worktop	40mm Square Edged Worktop in Woodstone
	Flooring	Tarkett Safetred Trend Oak Steel Grey
	Tiling	Johnsons Savoy Pebble 300x100mm
Finish 3	Units	Wall - Symphony Plaza Stone / Base - Symphony Plaza Mussel
	Worktop	40mm Square Edged Worktop in Pastel Oak
	Flooring	Tarkett Safetred Traditional Oak Dark
	Tiling	Johnsons Savoy Dew 300x100mm
	Kitchen	All apartments have the following
	Unit handles	Symphony Matt Nickel Square D
	Sink	Stainless Steel Single Bowl Sink and Mixer Tap
	Hob	CDA HN6411FR
	Oven	Indesit IFW 6330 IX UK
	Extractor Fan	Matrix MEH 601 SS
	Lighting	LED Recessed Rpotlights
	Sockets	3x Double Sockets with 1 USB

Bathroom	All apartments have the following
WC	Ideal Standard Tempo Wall Hung
Basin	Ideal Standard Profile 21 50cm Semi-Countertop
Basin Taps	Ideal Standard Concept Air Mixer Tap
Basin Waste	Penny Flip Basin Waste
Shower	Ideal Standard Contour 21 TMV3 with Rain Shower and Separate Hose
Wall Tiles	Johnsons Urbanique Mink Matt 360x275mm
Feature Tile	Waxman Ceramics Jewel Glass Mosaics
Floor Tiles	Johnsons Mode Mink, Finish: Bush Hammered 600x300mm
Vanity Frontage	Egger Laminate - Truffle Denver Oak
Vanity Worktop	Velstone - Soft White
Lighting	4x GU10 5W Spotlights IP65 Rated
	Separate 2x 1.5W Recessed Spotlights to Vanity Mirror
Towel Rail	New Space Electric Towel Rail 800x400mm
General	All apartments have the following
Heating	Thermaskirt
Warden Call	Tynetech Advent XT2
Smoke Detectors	AICO Smoke Detectors linked to warden call system and Hallway Sensor linked to whole building system

All ground floor apartments have French doors, providing direct access to the landscaped gardens or communal grounds.

Upper floor apartments that have external balconies are:

15, 16, 17, 18, 19, 20, 21, 22, 24, 25, 28, 29, 30, 31, 36, 37, 38, 39, 40, 41, 42, 43, 44, 51, 56, 57, 58, 59, 60, 61, 62, 63, 64, 65, 66.





emh care & support  
Part of emh group

# SPRINGFIELDS

— CREATING A FEELING —

# INDIVIDUAL APARTMENT DIMENSIONS

Apartment no.	Apartment type	Area / m <sup>2</sup>	Lounge	Kitchen	Bathroom	Bedroom 1	Bedroom 2
1 H	Viola 2 / A	51.76	4,652 x 3,666	3,150 x 2,245	2,200 x 2,350	3,641 x 3,666	-
2	Viola 2 / A	50.86	4,631 x 3,666	3,150 x 2,245	2,200 x 2,350	3,642 x 3,664	-
3 H	Viola 1 / A	49.84	4,631 x 3,626	3,150 x 2,245	2,200 x 2,350	3,637 x 3,324	-
4	Viola 1 / A	50.00	4,631 x 3,666	3,150 x 2,245	2,200 x 2,350	3,640 x 3,364	-
5	Pansy	63.78	4,434 (max) 3,000 (min) x 4,452	3,000 x 2,345	2,200 x 2,350	4,176 x 3,451	2,430 x 3,458
6 H	Viola 2 / A	50.98	4,633 x 3,666	3,151 x 2,245	2,200 x 2,350	3,660 x 3,664	-
7	Viola 2 / D	50.85	4,655 x 3,666	3,151 x 2,245	2,200 x 2,350	3,641 x 3,664	-
8	Aster	64.44	4,450 (max) 3,150 (min) x 4,557 (max) 3,282 (min)	3,150 x 2,220	2,200 x 2,350	3,476 x 4,249	2,474 x 3,417
9	Viola 2 / C	50.61	4,633 x 3,643	3,150 x 2,246	2,200 x 2,350	3,660 x 3,614	-
10	Petunia 1	51.95	5,116 (max) 2,929 (min) x 3,626 (max) 1,480 (min)	3,150 x 2,245	2,200 x 2,350	3,764 x 3,626	-
11 H	Petunia 1	51.52	5,116 (max) 2,929 (min) x 3,621 (max) 1,480 (min)	3,149 x 2,244	2,200 x 2,350	3,697 x 3,664	-
12	Marigold 1 / A	68.83	5,319 x 3,661	3,149 x 2,246	2,200 x 2,350	3,660 x 3,664	3,116 x 3,677 x 3,296 x 1,145
14	Viola 2 / A	50.97	4,653 x 3,661	3,150 x 2,246	2,200 x 2,350	3,660 x 3,661	-
15 H	Viola 2 / A	53.55	4,711 x 3,706	3,150 x 2,245	2,200 x 2,350	3,682 x 4,154	-
16	Cornflower 1	48.89	3,601 x 2,941	3,150 x 2,350	2,200 x 2,350	3,773 x 3,404	-
17 H	Viola 2 / A	51.19	4,650 x 3,706	3,150 x 2,245	2,200 x 2,350	3,683 x 3,704	-
18	Viola 2 / A	51.57	4,668 x 3,706	3,150 x 2,245	2,200 x 2,350	3,725 x 3,704	-
19 H	Viola 1 / B	50.00	3,666 x 4,668	3,150 x 2,245	2,200 x 2,350	3,639 x 3,364	-
20	Viola 1 / A	50.57	4,668 x 3,706	3,150 x 2,245	2,200 x 2,350	3,683 x 3,404	-
21	Pansy	64.76	4,434 (max) 3,000 (min) x 4,532 (max) 3,282 (min)	3,000 x 2,345	2,200 x 2,350	4,219 x 3,491 x 3,220	2,508 x 3,498
22 H	Viola 2 / A	51.31	4,670 x 3,706	3,150 x 2,245	2,200 x 2,350	3,663 x 3,704	-
23	Viola 2 / E	51.04	4,693 x 3,706	3,150 x 2,245	2,200 x 2,350	3,617 x 3,704	-
24	Aster	64.83	4,447 (max) 3,144 (min) x 4,636 (max) 3,280 (min)	3,144 x 2,200	2,200 x 2,350	3,479 x 4,289	2,557 x 3,459
25	Viola 2 / C	51.06	4,670 x 3,684	3,150 x 2,245	2,200 x 2,350	3,663 x 3,654	-
26 H	Petunia 2	52.22	2,887 x 3,671 x 1,480	3,150 x 2,245	2,200 x 2,350	3,807 x 3,654	-
27	Petunia 2	51.79	5,156 (max) 2,928 (min) x 3,661 (max) 1,479 (min)	3,150 x 2,245	2,200 x 2,350	3,697 x 3,704	-
28	Marigold 1 / A	67.32	5,322 x 3,701	3,150 x 2,245	2,200 x 2,350	3,698 x 3,704	3,181 x 3,717 x 3,338 x 1,164
29	Viola 2 / A	51.29	4,693 x 3,702	3,150 x 2,245	2,200 x 2,350	3,660 x 3,701	-
30	Viola 1 / B	50.76	4,582 x 3,702	3,150 x 2,245	2,200 x 2,350	3,793 x 3,412	-
31	Lobelia	68.83	5,632 (max) 3,444 (min) x 4,661 (max) 1,962 (min)	3,444 x 2,145	1,853 x 2,678	4,073 x 3,397	2,706 x 3,397
32	Viola 2 / F	55.38	4,569 x 4,312	3,154 x 2,245	2,200 x 2,350	3,729 x 4,011	-
33	Hollyhock	50.64	4,614 x 3,713	3,149 x 2,245	2,200 x 2,350	3,739 x 3,411	-
34	Viola 2 / B	55.74	4,614 x 4,313	3,149 x 2,245	2,200 x 2,350	3,739 x 4,011	-

# SPRINGFIELDS

Apartment no.	Apartment type	Area / m <sup>2</sup>	Lounge	Kitchen	Bathroom	Bedroom 1	Bedroom 2
35	Marigold 2	70.77	5,255 x 4,262	3,150 x 2,245	2,200 x 2,350	3,446 x 4,011	4,197 x 4,179 x 3,238 x 1,482
36	Poppy	59.13	5,134 x 4,262	3,150 x 2,245	2,200 x 2,350	3,802 x 4,062	-
37	Viola 2 / A	51.28	4,689 x 3,706	3,150 x 2,245	2,200 x 2,350	3,665 x 3,704	-
38	Cornflower 2	48.76	3,901 x 2,715	3,150 x 2,350	2,200 x 2,350	3,520 x 3,404	-
39	Viola 1 / B	51.55	4,693 x 4,006	3,150 x 2,245	2,200 x 2,350	3,664 x 3,406	-
40 H	Viola 2 / A	52.68	4,711 x 3,706	3,150 x 2,245	2,200 x 2,350	3,683 x 4,154	-
41	Cornflower 1	48.90	3,601 x 2,937	3,150 x 2,350	2,200 x 2,350	3,772 x 3,404	-
42 H	Viola 2 / A	51.20	4,647 x 3,706	3,148 x 2,245	2,200 x 2,350	3,684 x 3,704	-
43	Viola 2 / A	51.58	4,668 x 3,706	3,150 x 2,245	2,200 x 2,350	3,725 x 3,704	-
44 H	Viola 1 / A	50.34	4,668 x 3,706	3,150 x 2,245	2,200 x 2,350	3,639 x 3,404	-
45	Viola 2 / E	51.08	4,693 x 3,706	3,150 x 2,245	2,200 x 2,350	3,617 x 3,703	-
46 H	Petunia 2	52.26	5,113 (max) 2,886 (min) x 3,617 (max) 1,479 (min)	3,150 x 2,245	2,200 x 2,350	3,807 x 3,654	-
47	Petunia 2	51.83	5,156 (max) 2,929 (min) x 3,661 (max) 1,479 (min)	3,150 x 2,245	2,200 x 2,350	3,697 x 3,704	-
48	Marigold 1 / B	67.38	5,322 x 3,701	3,150 x 2,245	2,200 x 2,350	3,698 x 3,704	3,169 x 3,716 x 3,338 x 1,164
49 H	Viola 2 / B	51.32	4,693 x 3,702	3,150 x 2,245	2,200 x 2,350	3,660 x 3,701	-
50	Viola 1 / C	50.71	4,582 x 3,702	3,150 x 2,245	2,200 x 2,350	3,794 x 3,400	-
51	Lobelia	68.84	5,632 (max) 3,444 (min) x 4,661 (max) 1,962 (min)	3,444 x 2,145	1,852 x 2,678	4,073 x 3,775	2,706 x 3,397
52	Viola 2 / F	55.40	4,565 x 4,313	3,150 x 2,245	2,200 x 2,350	3,733 x 4,010	-
53	Viola 2 / B	55.76	4,616 x 4,283	3,150 x 2,275	2,200 x 2,350	3,737 x 4,010	-
54	Viola 2 / B	55.76	4,615 x 4,313	3,150 x 2,245	2,200 x 2,350	3,737 x 4,010	-
55	Marigold 2	70.79	5,255 x 4,262	3,150 x 2,245	2,200 x 2,350	3,444 x 4,010	4,179 x 3,238
56	Poppy	59.12	5,134 x 4,262	3,150 x 2,245	2,200 x 2,350	3,802 x 3,960	-
57	Viola 2 / A	51.27	4,689 x 3,706	3,150 x 2,245	2,200 x 2,350	3,664 x 3,704	-
58	Cornflower 2	48.79	3,901 x 4,994 (max) 2,715 (min)	3,150 x 2,350	2,200 x 2,350	3,520 x 3,404	-
59	Viola 1 / B	51.57	4,693 x 4,006	3,150 x 2,245	2,200 x 2,350	3,664 x 3,406	-
60	Tulip 1	52.77	5,667 x 3,120 (max) 3,004 (min)	3,150 x 1,845	2,625 x 2,004	4,736 x 3,004	-
61	Tulip 2	52.76	5,736 x 3,009	3,150 x 1,859	2,634 x 1,859	4,740 x 3,009	-
62	Daffodil	62.30	5,549 x 3,070	3,150 x 1,845	2,634 x 1,999	4,745 x 3,009	3,079 x 963 x 3,009 x 1,432
63	Tulip 2	52.72	5,883 x 3,040	3,150 x 1,845	2,663 x 1,706	4,693 x 3,054	-
64	Viola 2 / A	51.33	4,688 x 3,706	3,150 x 2,245	2,200 x 2,350	3,665 x 3,704	-
65	Cornflower 2	48.81	3,904 x 4,994 (max) 2,715 (min)	3,150 x 2,347	2,200 x 2,350	3,521 x 3,404	-
66	Viola 1 / B	51.57	4,692 x 4,006	3,150 x 2,245	2,200 x 2,350	3,665 x 3,406	-

**H = Handed:** the apartment is a mirror image of the plans illustrated

Our floor plans are provided for illustrative purposes only. For specific apartment dimensions please check the individual apartment sizes with the Springfields Team.

emh care & support  
Part of emh group

# SPRINGFIELDS

APARTMENT TYPE 1:

---

## PANSY

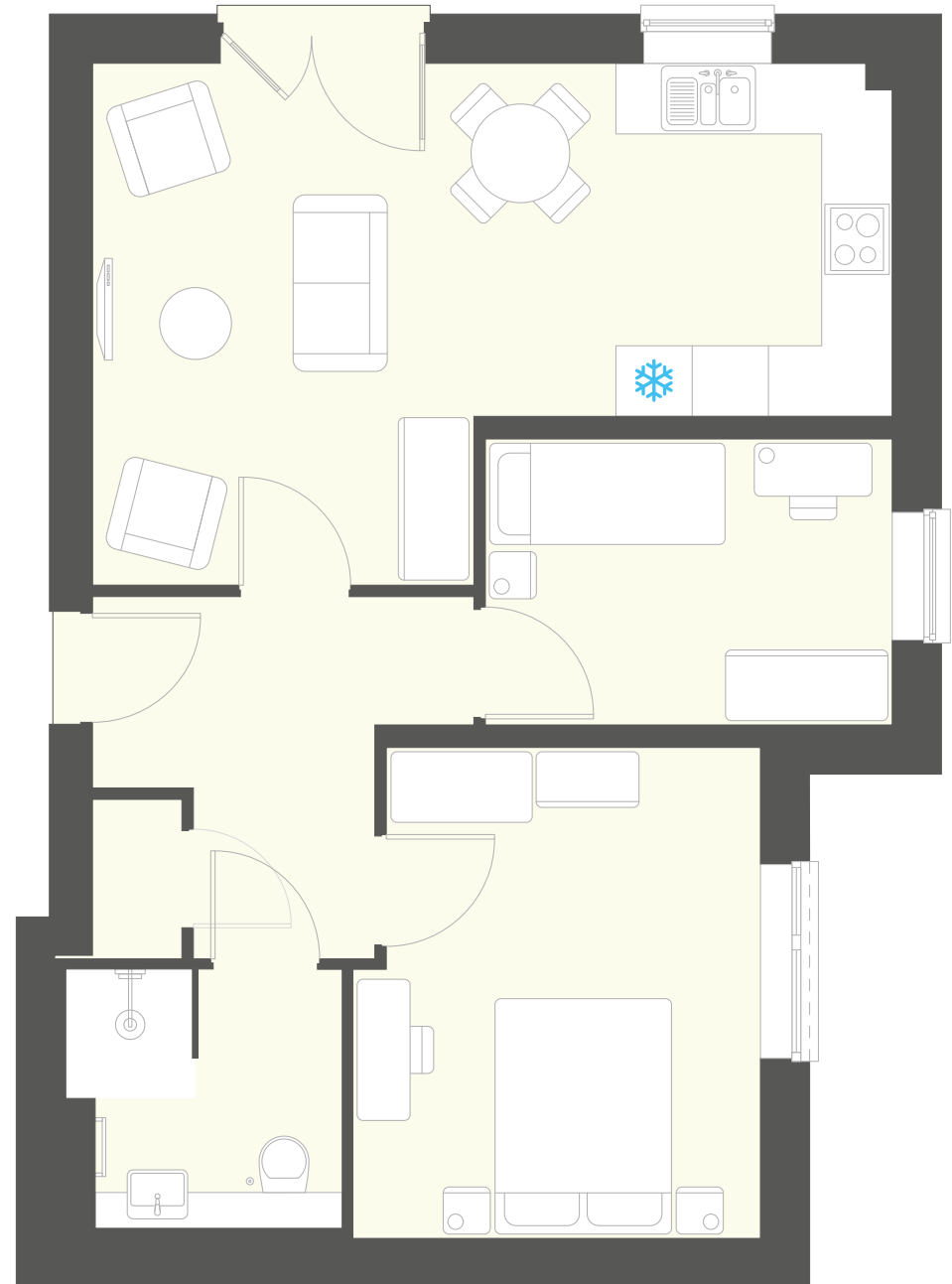
---



APARTMENT TYPE 1:

# PANSY

Apartment	No. of bedrooms	Floor/Story	Area m <sup>2</sup>	Kitchen finish
5	2	G	63.8	2
21	2	1	64.8	3



 = Fridge/freezer space

Our floor plans are provided for illustrative purposes only. For specific apartment dimensions please check the individual apartment sizes with the Springfields Team.

emh care & support  
Part of emh group

# SPRINGFIELDS

APARTMENT TYPE 2:

---

**VIOLA / 1A**

---



APARTMENT TYPE 2:

# VIOLA / 1A

Apartment	No. of bedrooms	Floor/Story	Area m <sup>2</sup>	Kitchen finish
3 H	1	G	49.8	3
4	1	G	50.0	1
20	1	1	50.6	2
44 H	1	2	50.3	2



**H = Handed:** the apartment is a mirror image of the plan illustrated here ❄️ = Fridge/freezer space

Our floor plans are provided for illustrative purposes only. For specific apartment dimensions please check the individual apartment sizes with the Springfields Team.



emh care & support  
Part of emh group

# SPRINGFIELDS

APARTMENT TYPE 2:

---

**VIOLA / 1B**

---



APARTMENT TYPE 2:

# VIOLA / 1B

Apartment	No. of bedrooms	Floor/Story	Area m <sup>2</sup>	Kitchen finish
19 H	1	1	50.0	1
30 H	1	1	50.8	3
39	1	1	51.6	3
59	1	2	51.6	2
66	1	3	51.6	1



**H = Handed:** the apartment is a mirror image of the plan illustrated here ❄️ = Fridge/freezer space

Our floor plans are provided for illustrative purposes only. For specific apartment dimensions please check the individual apartment sizes with the Springfields Team.

emh care & support  
Part of emh group

# SPRINGFIELDS

APARTMENT TYPE 2:

---

**VIOLA / 1C**

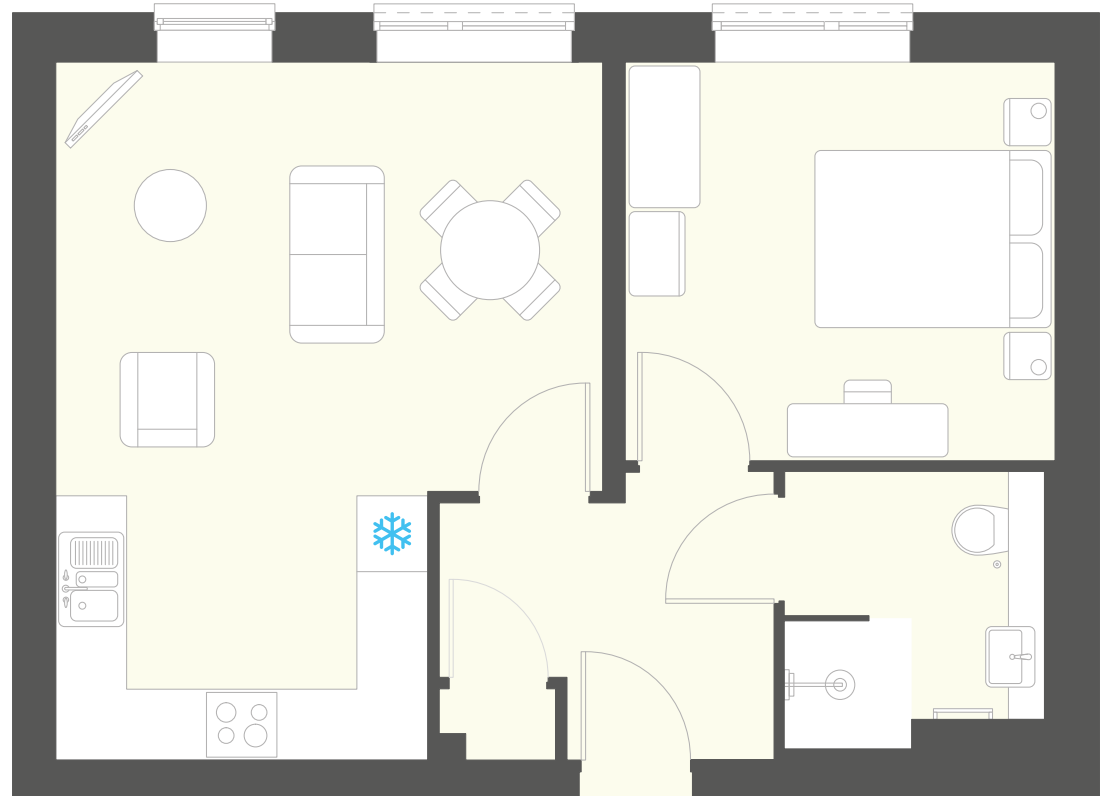
---



APARTMENT TYPE 2:

# VIOLA / 1C

Apartment	No. of bedrooms	Floor/Story	Area m <sup>2</sup>	Kitchen finish
50	1	2	50.7	2



 = Fridge/freezer space

Our floor plans are provided for illustrative purposes only. For specific apartment dimensions please check the individual apartment sizes with the Springfields Team.

emh care & support  
Part of emh group

# SPRINGFIELDS

APARTMENT TYPE 2:

---

**VIOLA / 2A**

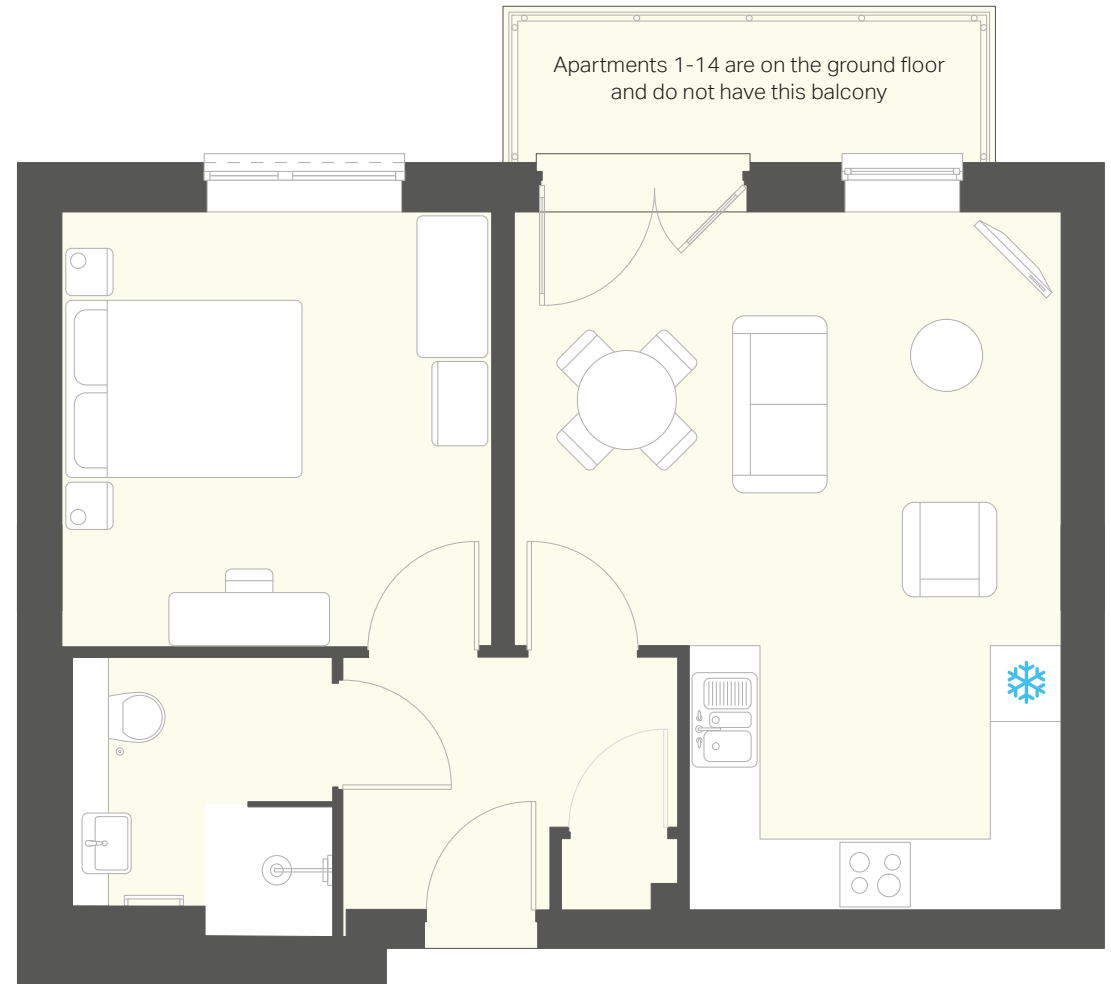
---



## APARTMENT TYPE 2:

# VIOLA / 2A

Apartment	No. of bedrooms	Floor/Story	Area m <sup>2</sup>	Kitchen finish
1 H	1	G	51.8	1
2	1	G	50.9	2
6 H	1	G	51.0	3
14	1	G	51.0	1
15 H	1	1	53.6	3
17 H	1	1	51.2	2
18	1	1	51.6	3
22 H	1	1	51.3	1
29	1	1	51.3	2
37	1	1	51.3	1
40 H	1	2	52.7	1
42 H	1	2	51.2	3
43	1	2	51.6	1
57	1	2	51.3	3
64	1	3	51.3	2



**H = Handed:** the apartment is a mirror image of the plan illustrated here ❄️ = Fridge/freezer space

Our floor plans are provided for illustrative purposes only. For specific apartment dimensions please check the individual apartment sizes with the Springfields Team.

emh care & support  
Part of emh group

# SPRINGFIELDS

APARTMENT TYPE 2:

---

**VIOLA / 2B**

---

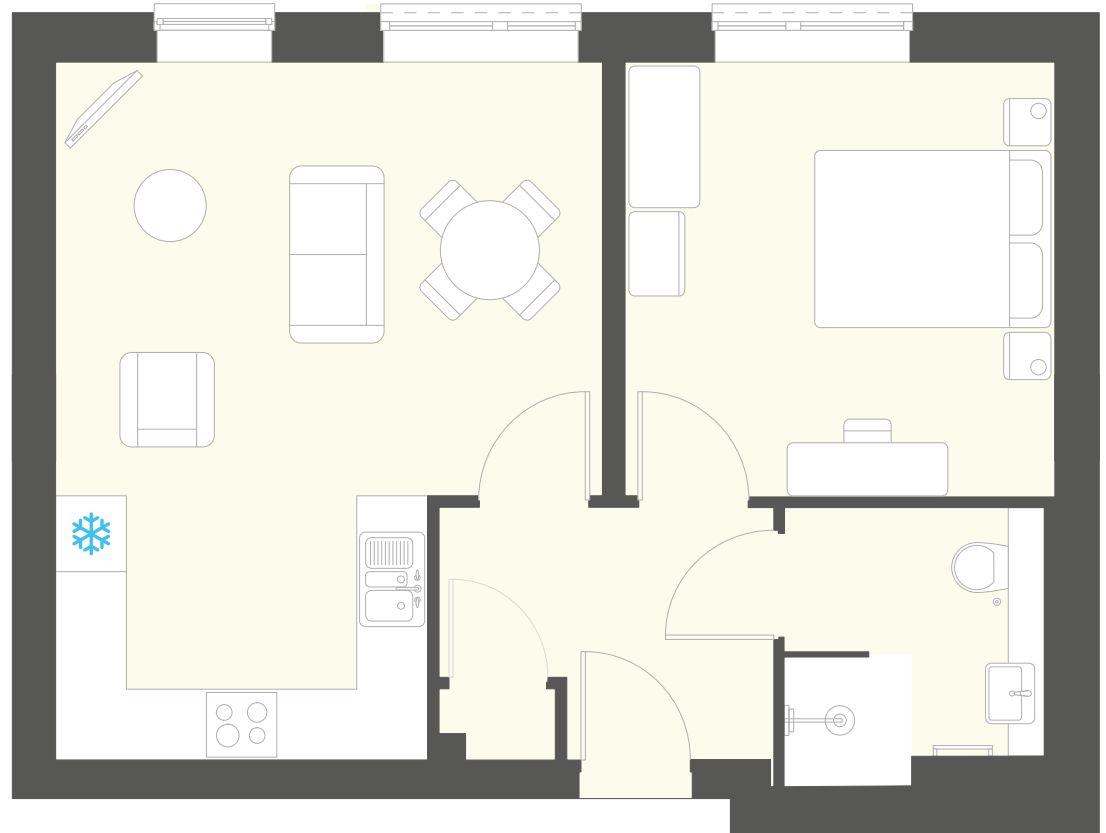


## APARTMENT TYPE 2:

# VIOLA / 2B

Apartment	No. of bedrooms	Floor/Story	Area m <sup>2</sup>	Kitchen finish
34	1	1	55.7	1
49 H	1	2	51.3	1
53	1	2	55.8	2
54	1	2	55.8	3

Sink in apartment 53 is on opposite wall.



 = Fridge/freezer space

Our floor plans are provided for illustrative purposes only. For specific apartment dimensions please check the individual apartment sizes with the Springfields Team.



emh care & support  
Part of emh group

# SPRINGFIELDS

APARTMENT TYPE 2:

---

**VIOLA / 2C**

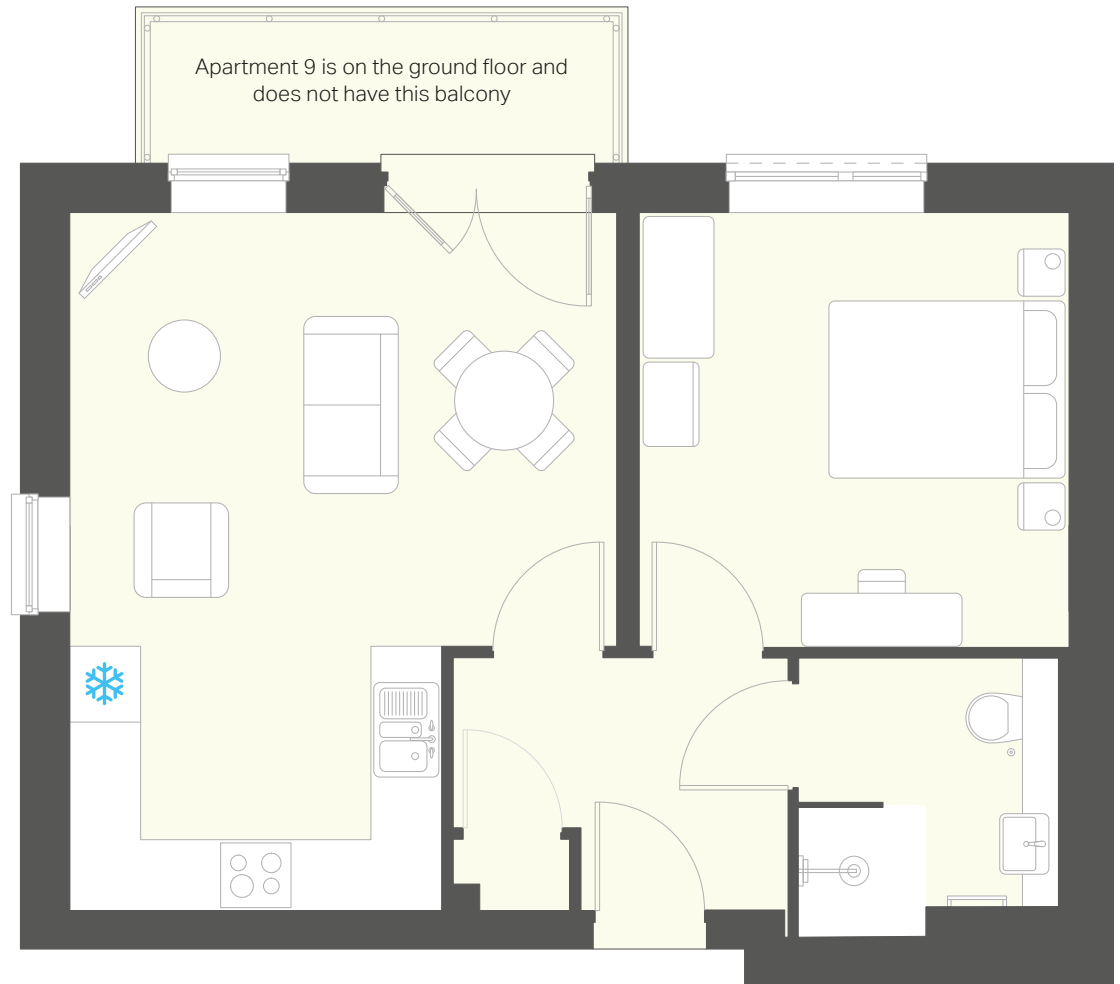
---



APARTMENT TYPE 2:

# VIOLA / 2C

Apartment	No. of bedrooms	Floor/Story	Area m <sup>2</sup>	Kitchen finish
9	1	G	50.6	3
25	1	1	51.1	1



**H = Handed:** the apartment is a mirror image of the plan illustrated here ❄️ = Fridge/freezer space

Our floor plans are provided for illustrative purposes only. For specific apartment dimensions please check the individual apartment sizes with the Springfields Team.

emh care & support  
Part of emh group

# SPRINGFIELDS

APARTMENT TYPE 2:

---

**VIOLA / 2D**

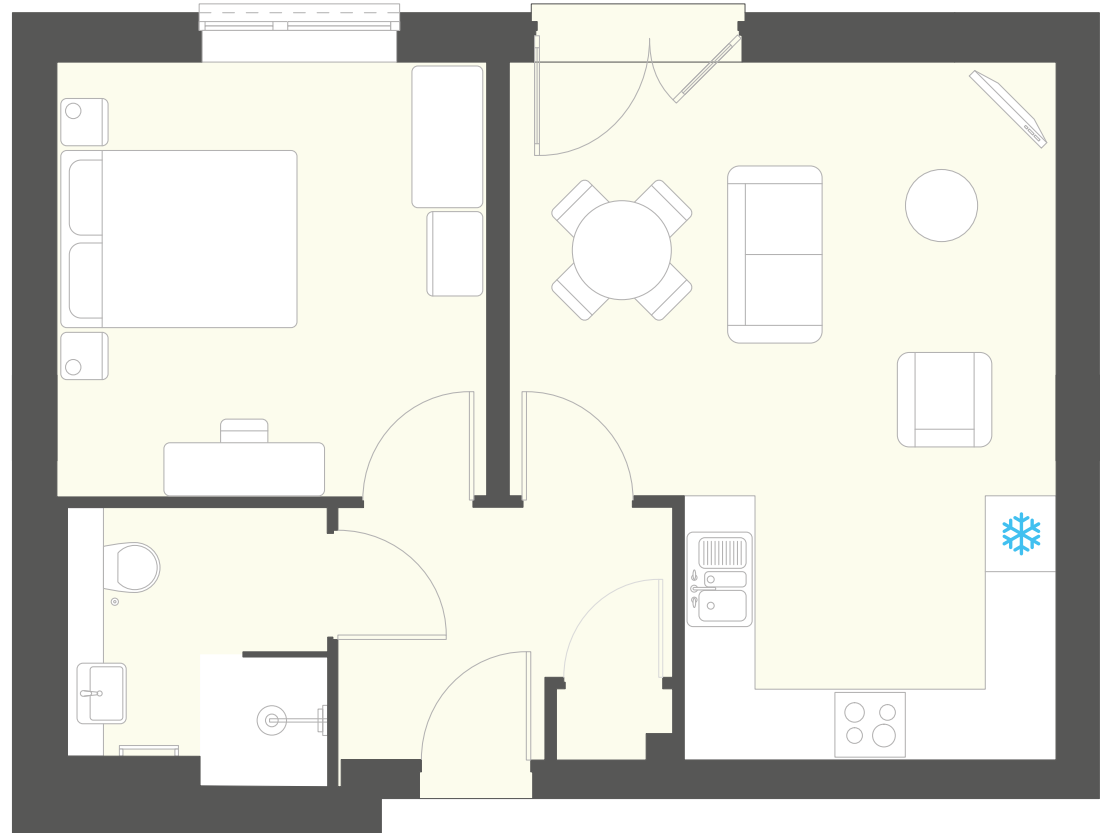
---



APARTMENT TYPE 2:

# VIOLA / 2D

Apartment	No. of bedrooms	Floor/Story	Area m <sup>2</sup>	Kitchen finish
7	1	G	50.8	1



 = Fridge/freezer space

Our floor plans are provided for illustrative purposes only. For specific apartment dimensions please check the individual apartment sizes with the Springfields Team.

emh care & support  
Part of emh group

# SPRINGFIELDS

APARTMENT TYPE 2:

---

**VIOLA / 2E**

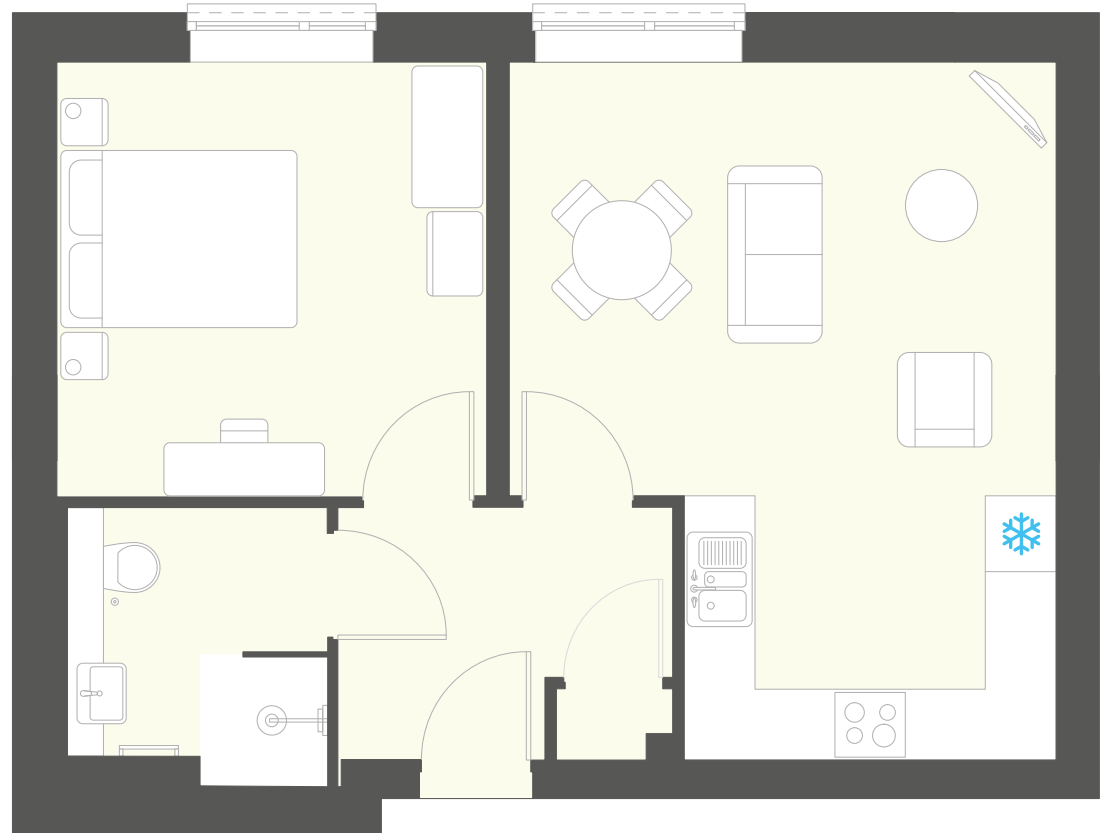
---



APARTMENT TYPE 2:

# VIOLA / 2E

Apartment	No. of bedrooms	Floor/Story	Area m <sup>2</sup>	Kitchen finish
23	1	1	51.0	2
45	1	2	51.1	3



❄ = Fridge/freezer space

Our floor plans are provided for illustrative purposes only. For specific apartment dimensions please check the individual apartment sizes with the Springfields Team.

emh care & support  
Part of emh group

# SPRINGFIELDS

APARTMENT TYPE 2:

---

**VIOLA / 2F**

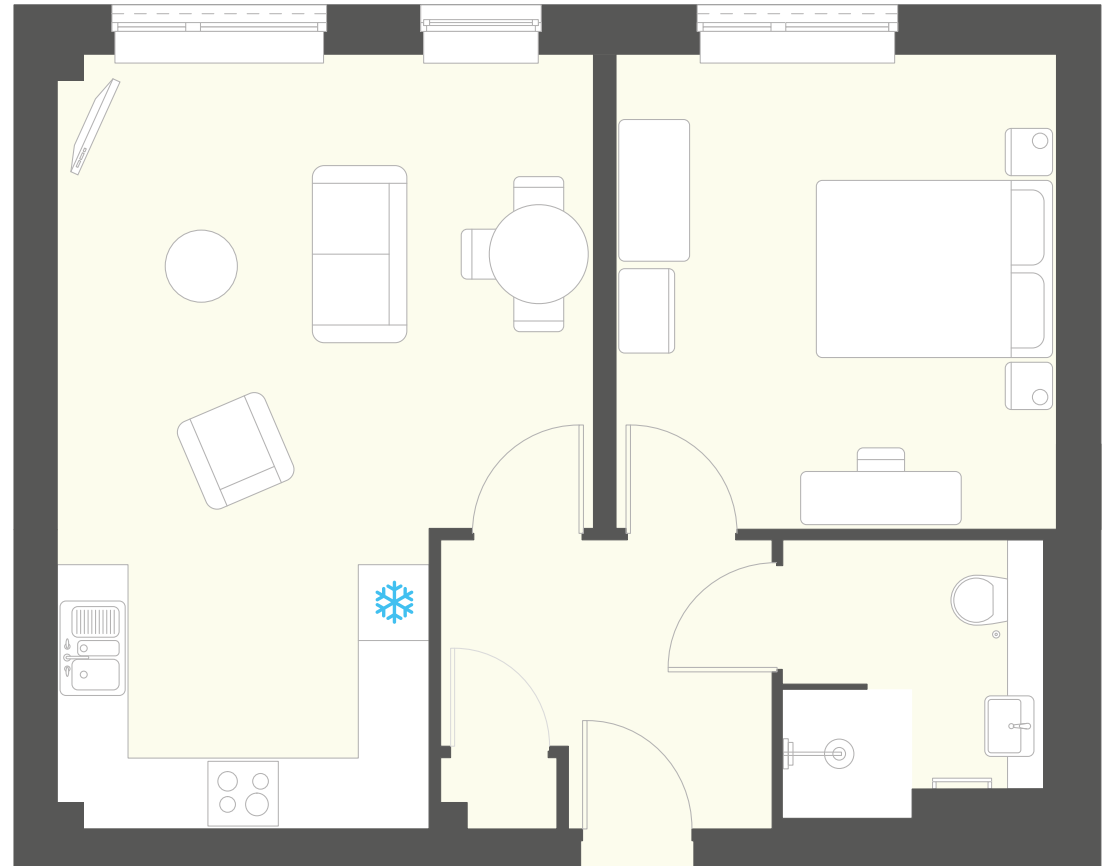
---



APARTMENT TYPE 2:

# VIOLA / 2F

Apartment	No. of bedrooms	Floor/Story	Area m <sup>2</sup>	Kitchen finish
32	1	1	55.4	2
52	1	2	55.4	1



❄ = Fridge/freezer space

Our floor plans are provided for illustrative purposes only. For specific apartment dimensions please check the individual apartment sizes with the Springfields Team.



emh care & support  
Part of emh group

# SPRINGFIELDS

APARTMENT TYPE 3:

---

**ASTER**

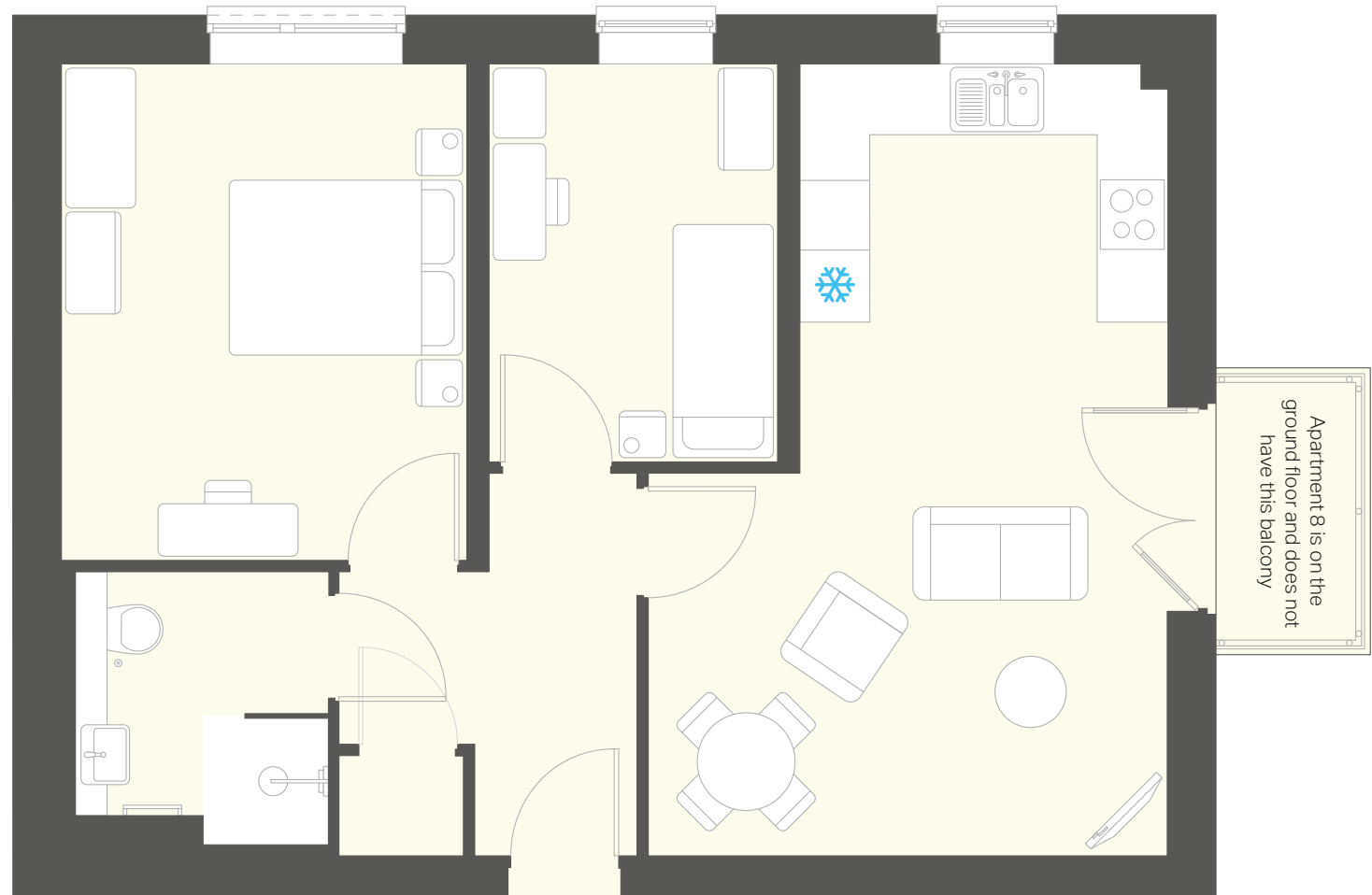
---



APARTMENT TYPE 3:

# ASTER

Apartment	No. of bedrooms	Floor/Story	Area m <sup>2</sup>	Kitchen finish
8	2	G	64.4	2
24	2	1	64.8	3



❄ = Fridge/freezer space

Our floor plans are provided for illustrative purposes only. For specific apartment dimensions please check the individual apartment sizes with the Springfields Team.

emh care & support  
Part of emh group

# SPRINGFIELDS

APARTMENT TYPE 4:

---

## PETUNIA / 1

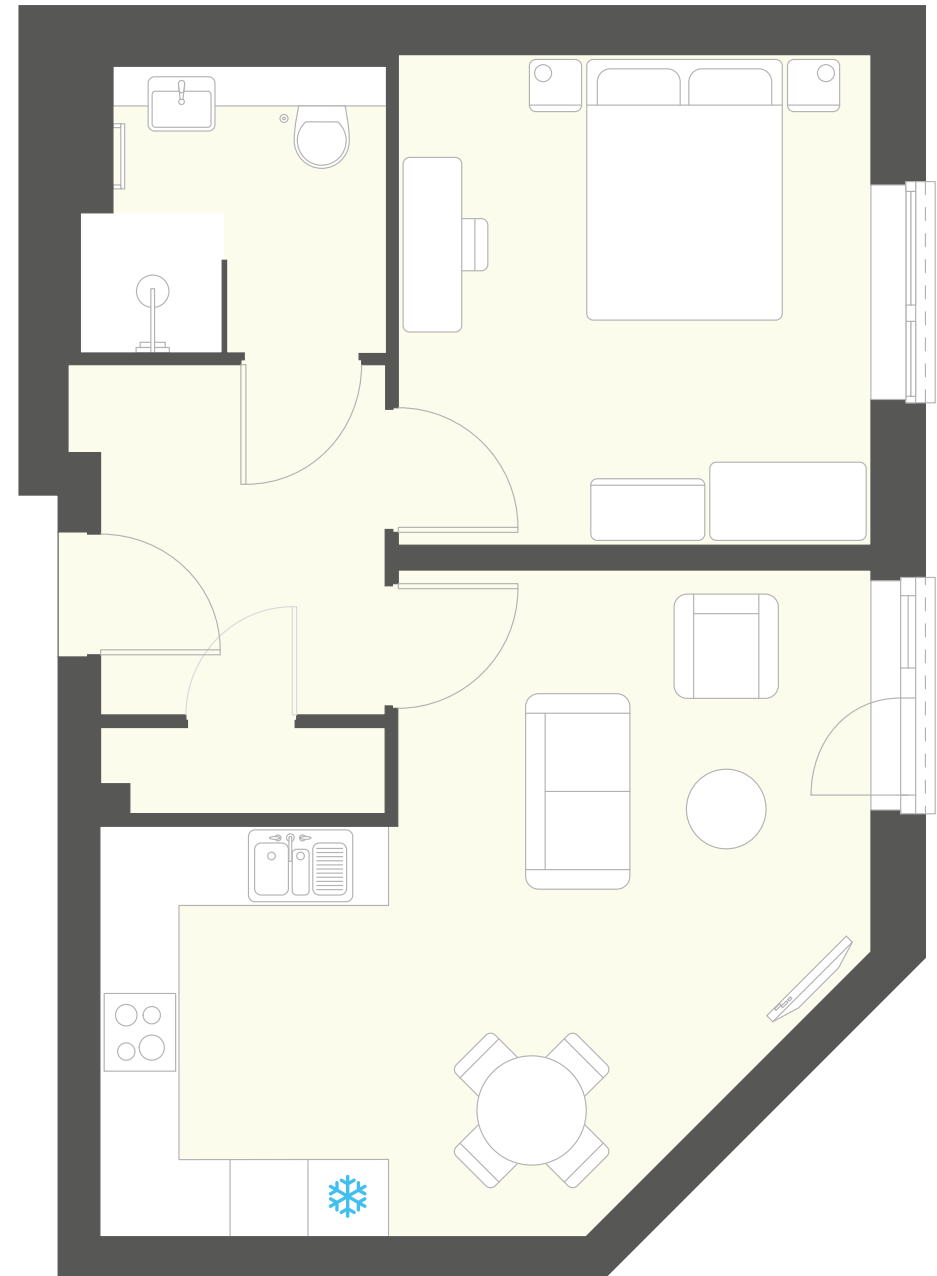
---



APARTMENT TYPE 4:

# PETUNIA / 1

Apartment	No. of bedrooms	Floor/Story	Area m <sup>2</sup>	Kitchen finish
10	1	G	52	1
11 H	1	G	51.5	2



**H = Handed:** the apartment is a mirror image of the plan illustrated here ❄️ = Fridge/freezer space

Our floor plans are provided for illustrative purposes only. For specific apartment dimensions please check the individual apartment sizes with the Springfields Team.

emh care & support  
Part of emh group

# SPRINGFIELDS

APARTMENT TYPE 4:

---

## PETUNIA / 2

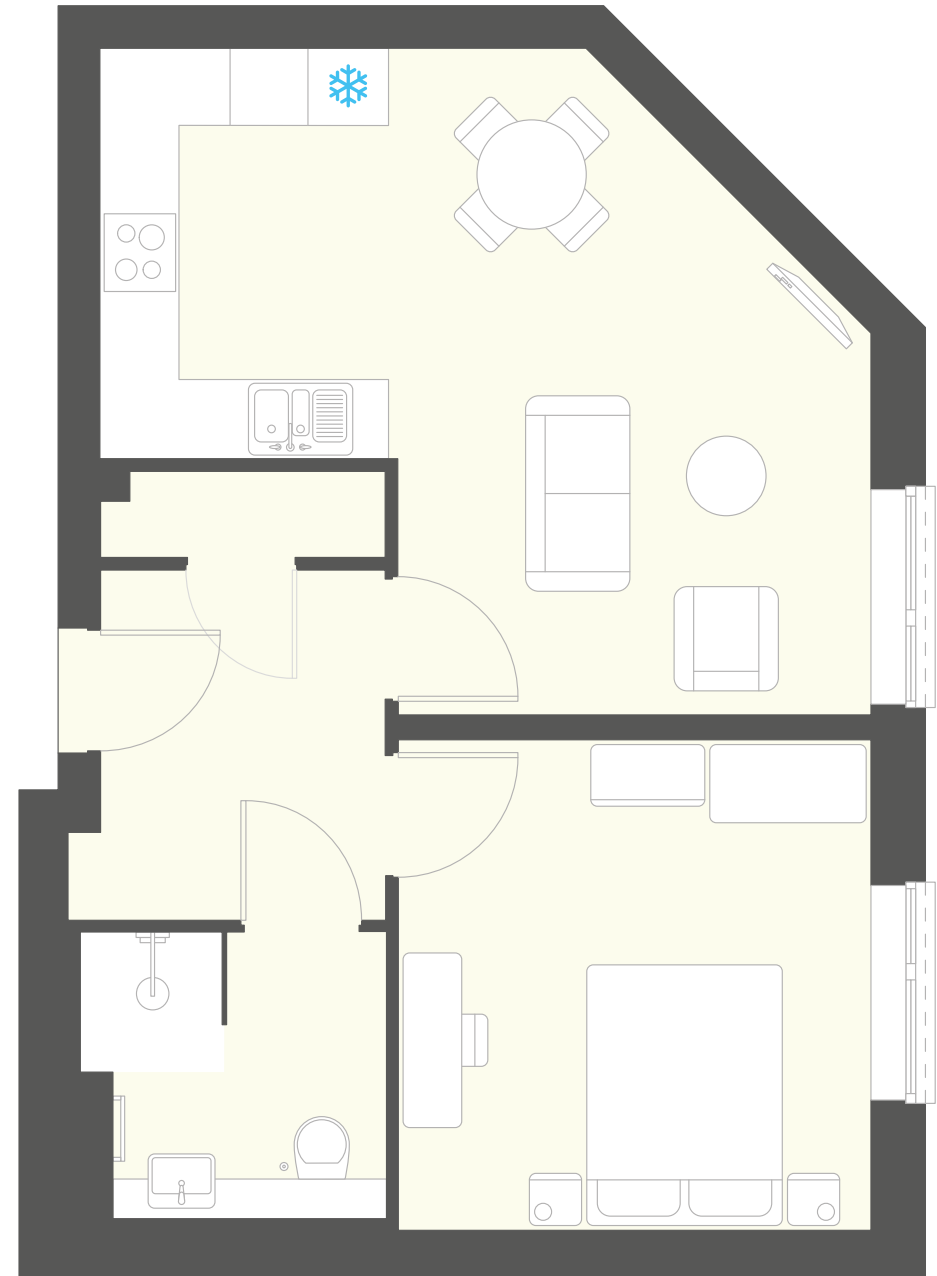
---



APARTMENT TYPE 4:

# PETUNIA / 2

Apartment	No. of bedrooms	Floor/Story	Area m <sup>2</sup>	Kitchen finish
26 H	1	1	52.2	2
27	1	1	51.8	3
46 H	1	2	52.3	1
47	1	2	51.8	2



**H = Handed:** the apartment is a mirror image of the plan illustrated here ❄️ = Fridge/freezer space

Our floor plans are provided for illustrative purposes only. For specific apartment dimensions please check the individual apartment sizes with the Springfields Team.

emh care & support  
Part of emh group

# SPRINGFIELDS

APARTMENT TYPE 5:

---

**MARIGOLD / 1A**

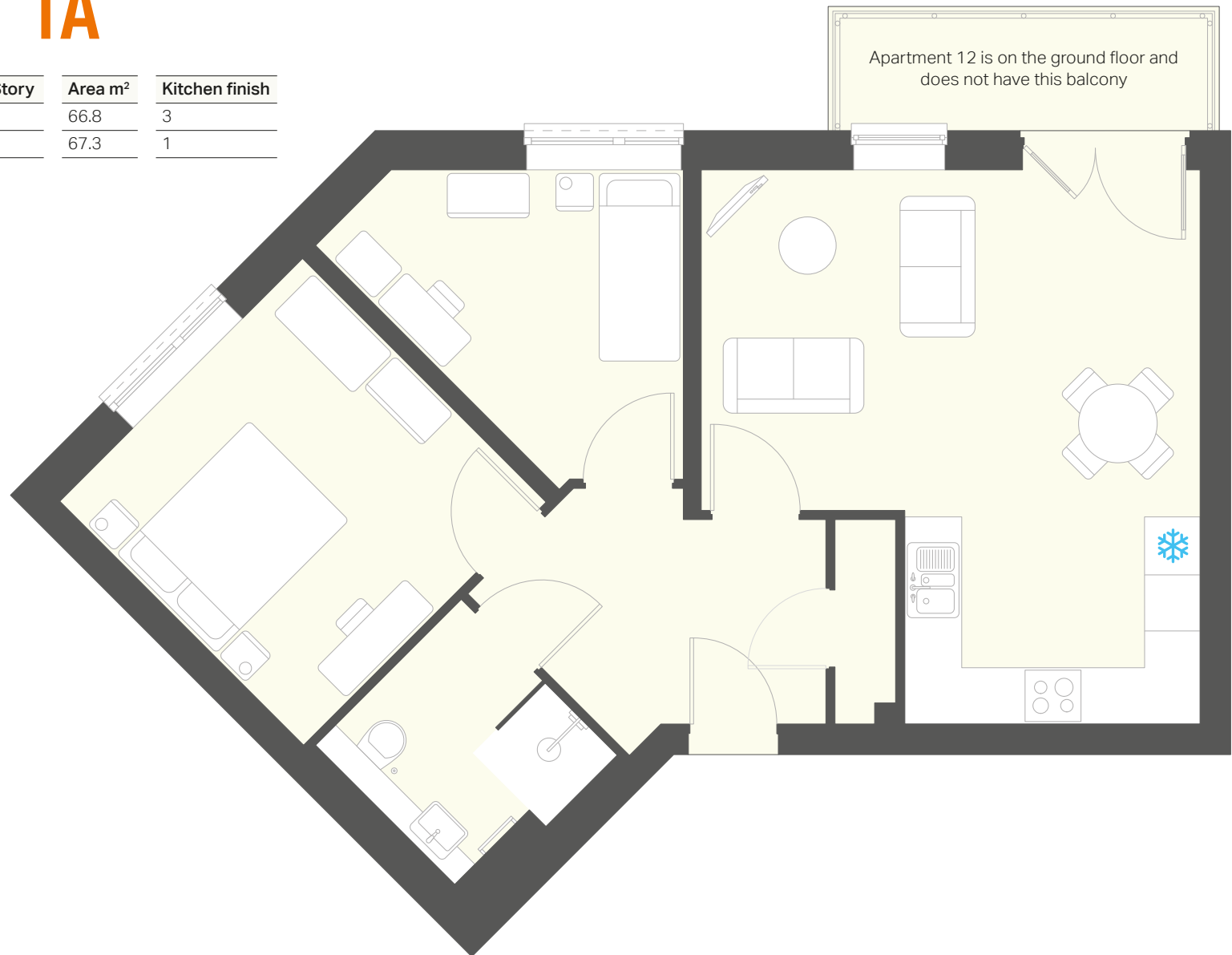
---



APARTMENT TYPE 5:

# MARIGOLD / 1A

Apartment	No. of bedrooms	Floor/Story	Area m <sup>2</sup>	Kitchen finish
12	2	G	66.8	3
28	2	1	67.3	1



❄ = Fridge/freezer space

Our floor plans are provided for illustrative purposes only. For specific apartment dimensions please check the individual apartment sizes with the Springfields Team.



emh care & support  
Part of emh group

# SPRINGFIELDS

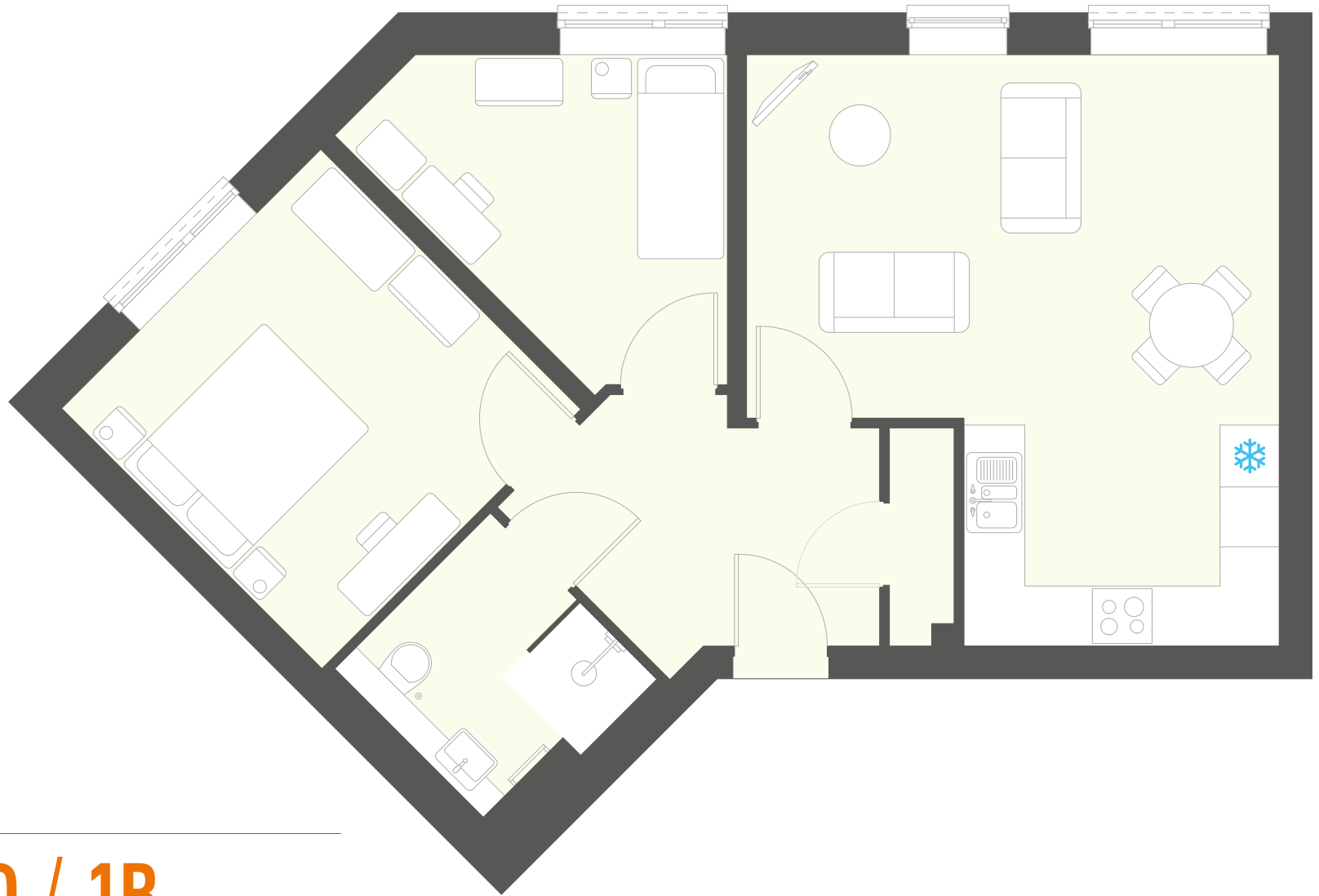
APARTMENT TYPE 5:

---

**MARIGOLD / 1B**

---





APARTMENT TYPE 5:

# MARIGOLD / 1B

Apartment	No. of bedrooms	Floor/Story	Area m <sup>2</sup>	Kitchen finish
48	2	2	67.4	3

❄ = Fridge/freezer space

Our floor plans are provided for illustrative purposes only. For specific apartment dimensions please check the individual apartment sizes with the Springfields Team.

emh care & support  
Part of emh group

# SPRINGFIELDS

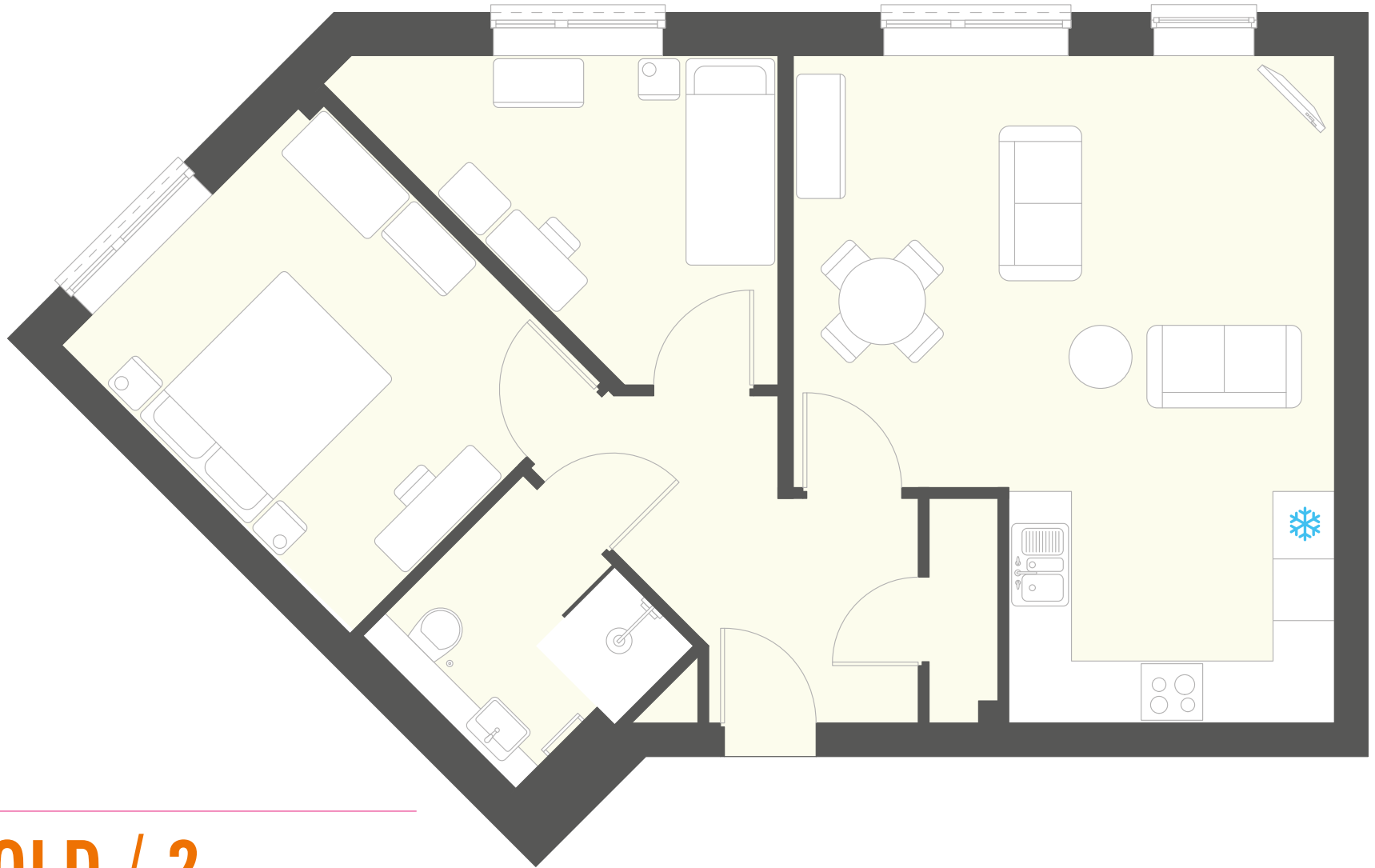
APARTMENT TYPE 5:

---

## MARIGOLD / 2

---





APARTMENT TYPE 5:

## MARIGOLD / 2

Apartment	No. of bedrooms	Floor/Story	Area m <sup>2</sup>	Kitchen finish
35	2	1	70.8	2
55	2	2	70.8	1

❄ = Fridge/freezer space

Our floor plans are provided for illustrative purposes only. For specific apartment dimensions please check the individual apartment sizes with the Springfields Team.

emh care & support  
Part of emh group

# SPRINGFIELDS

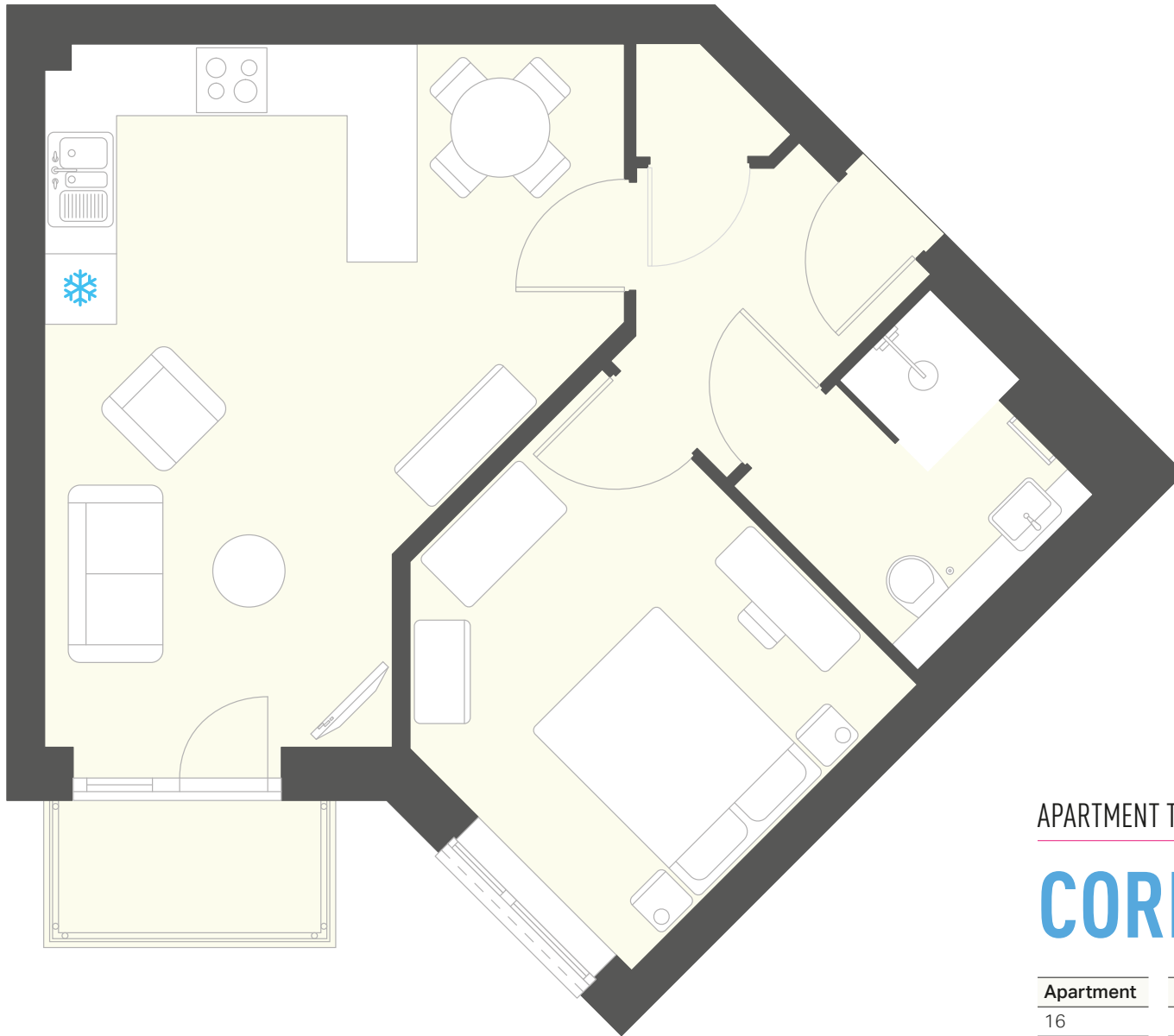
APARTMENT TYPE 6:

---

## CORNFLOWER / 1

---





APARTMENT TYPE 6:

# CORNFLOWER / 1

Apartment	No. of bedrooms	Floor/Story	Area m <sup>2</sup>	Kitchen finish
16	1	1	48.9	1
41	1	2	48.9	2

❄️ = Fridge/freezer space

Our floor plans are provided for illustrative purposes only. For specific apartment dimensions please check the individual apartment sizes with the Springfields Team.

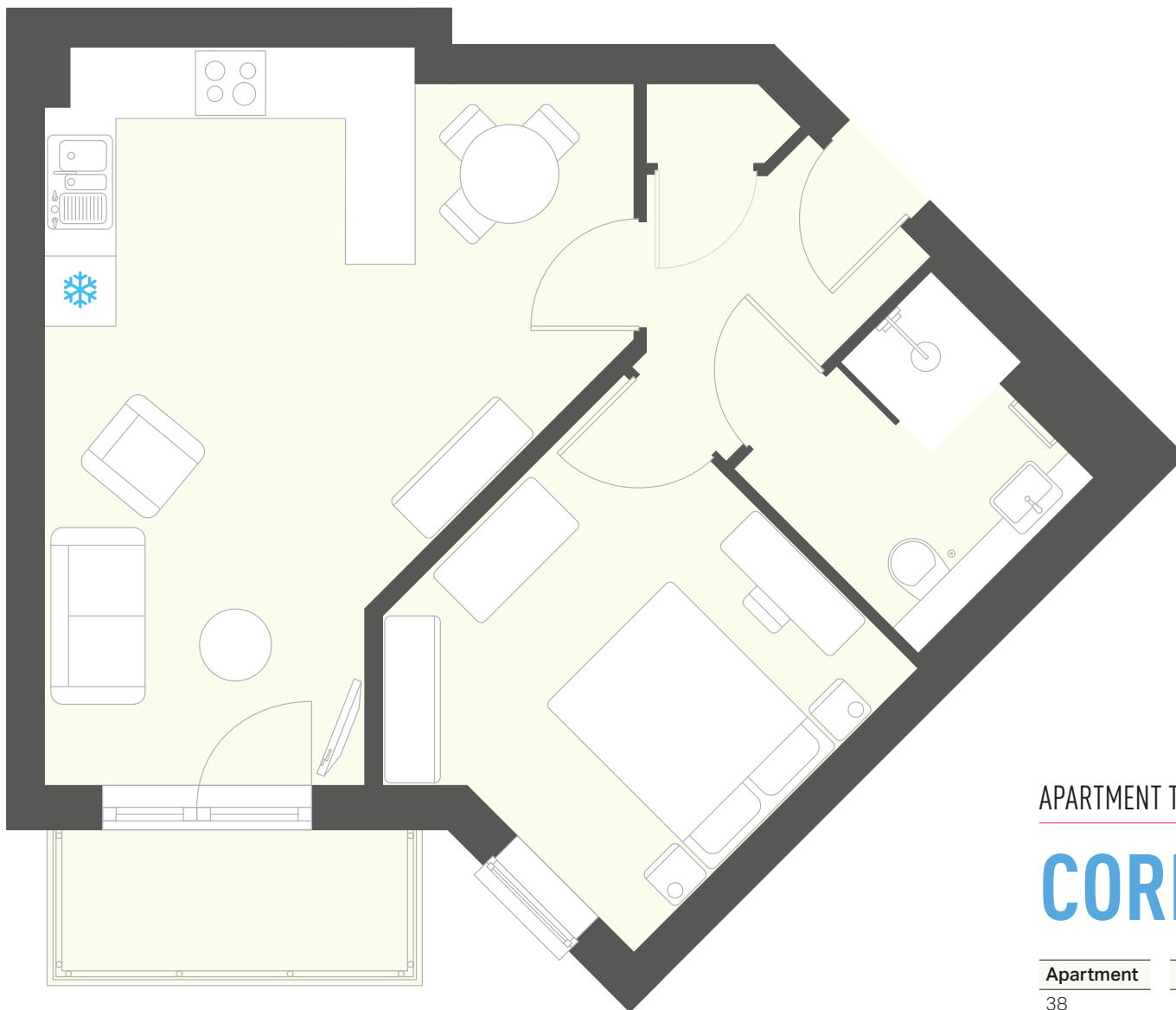
emh care & support  
Part of emh group

# SPRINGFIELDS

APARTMENT TYPE 6:

## CORNFLOWER / 2





APARTMENT TYPE 6:

## CORNFLOWER / 2

Apartment	No. of bedrooms	Floor/Story	Area m <sup>2</sup>	Kitchen finish
38	1	1	48.8	2
58	1	2	48.8	1
65	1	3	48.8	3

❄️ = Fridge/freezer space

Our floor plans are provided for illustrative purposes only. For specific apartment dimensions please check the individual apartment sizes with the Springfields Team.



emh care & support  
Part of emh group

# SPRINGFIELDS

APARTMENT TYPE 7:

---

## LOBELIA

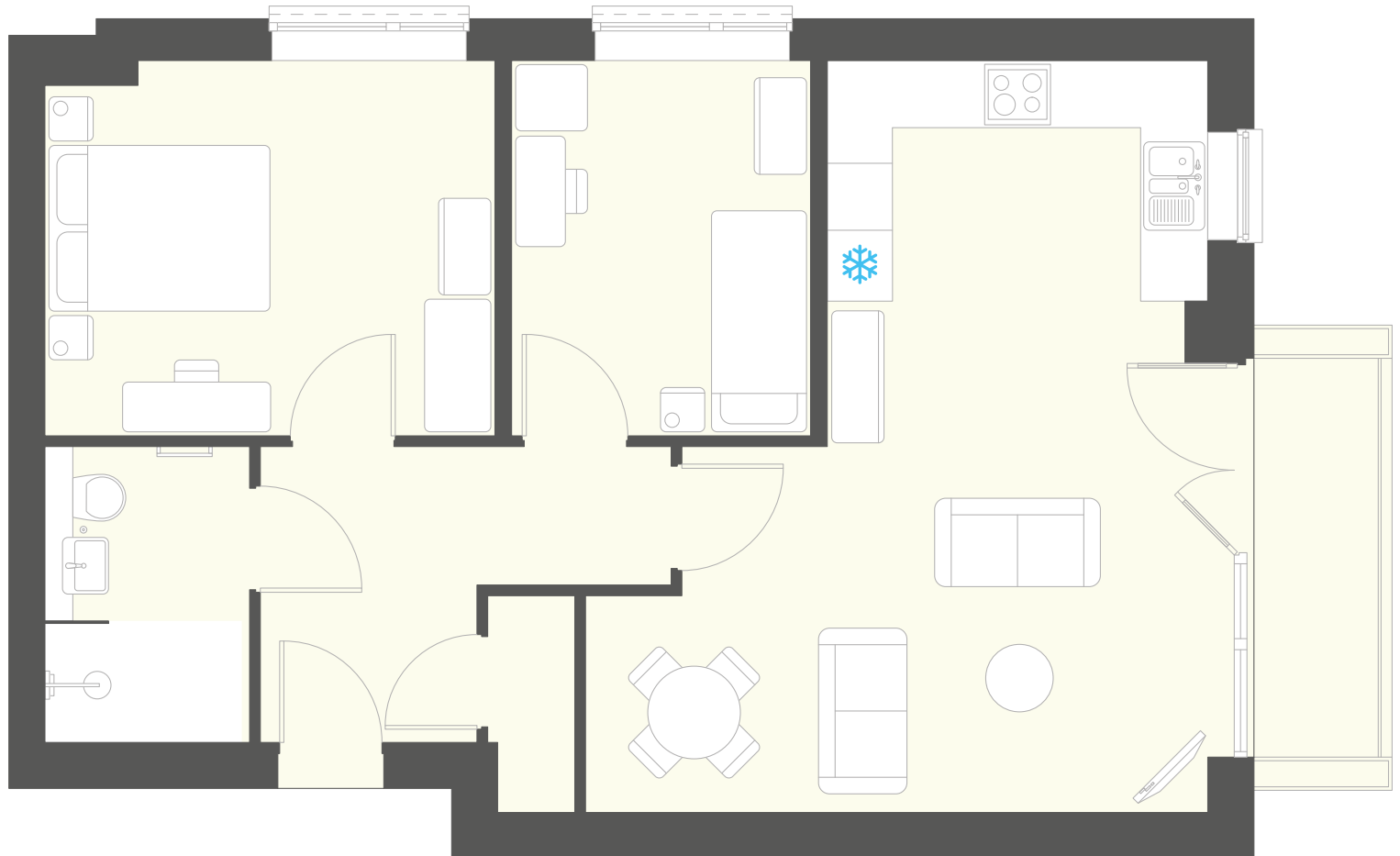
---



APARTMENT TYPE 7:

# LOBELIA

Apartment	No. of bedrooms	Floor/Story	Area m <sup>2</sup>	Kitchen finish
31	2	1	68.8	1
51	2	2	68.8	3



❄ = Fridge/freezer space

Our floor plans are provided for illustrative purposes only. For specific apartment dimensions please check the individual apartment sizes with the Springfields Team.

emh care & support  
Part of emh group

# SPRINGFIELDS

APARTMENT TYPE 8:

---

## HOLLYHOCK

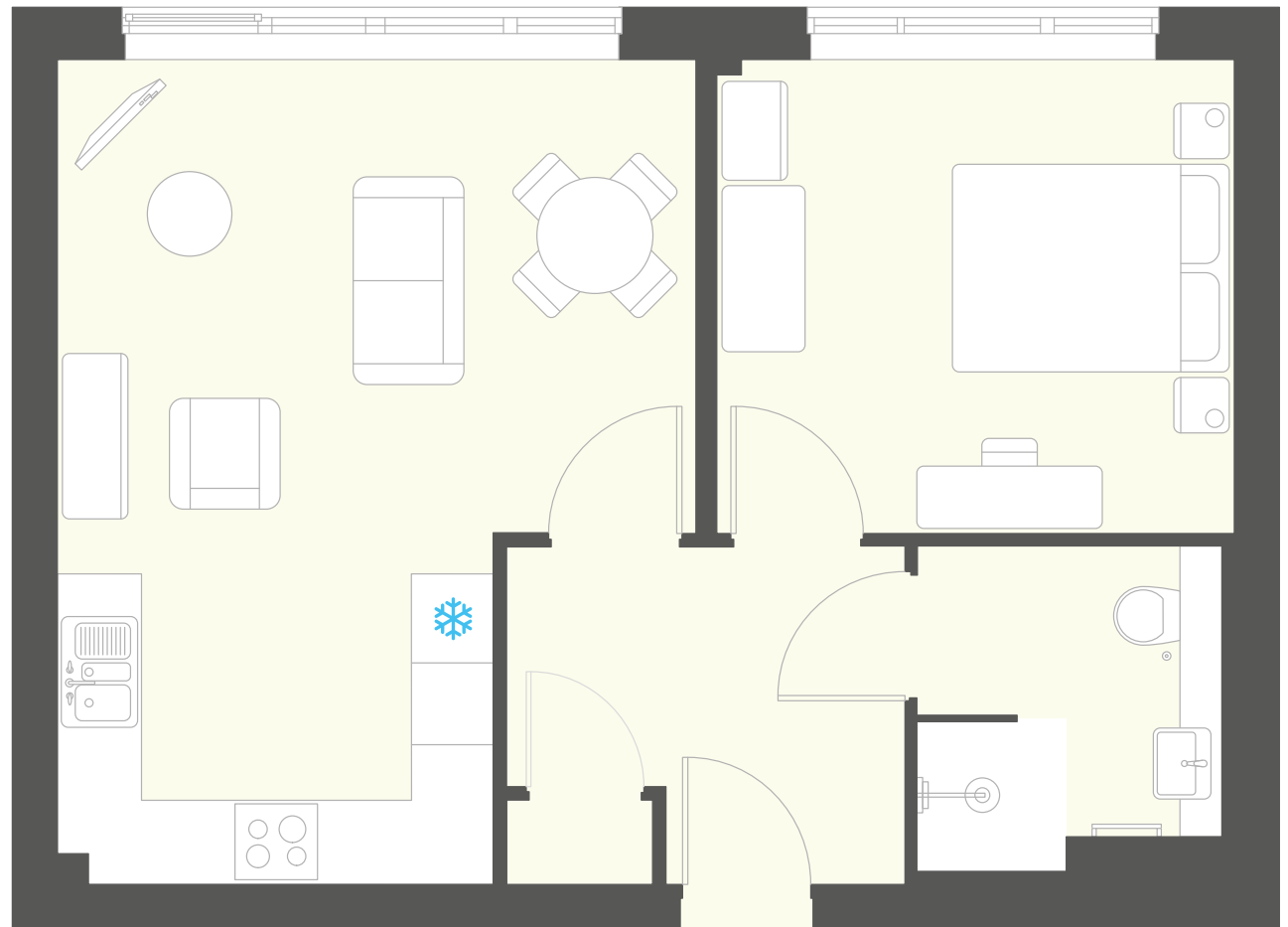
---



APARTMENT TYPE 8:

# HOLLYHOCK

Apartment	No. of bedrooms	Floor/Story	Area m <sup>2</sup>	Kitchen finish
33	1	1	50.7	3



 = Fridge/freezer space

Our floor plans are provided for illustrative purposes only. For specific apartment dimensions please check the individual apartment sizes with the Springfields Team.

emh care & support  
Part of emh group

# SPRINGFIELDS



APARTMENT TYPE 9:

---

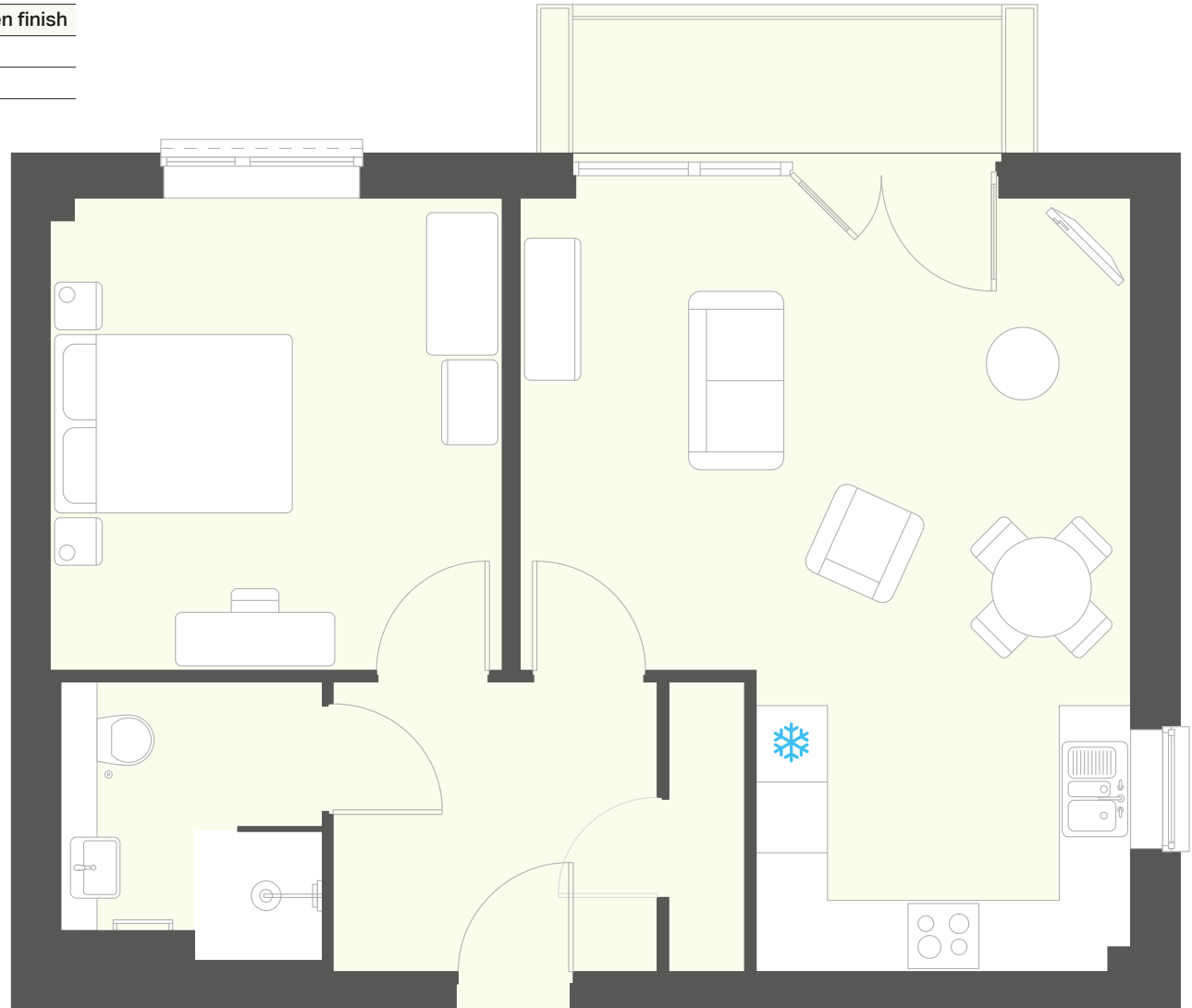
**POPPY**

---

APARTMENT TYPE 9:

# POPPY

Apartment	No. of bedrooms	Floor/Story	Area m <sup>2</sup>	Kitchen finish
36	1	1	59.1	3
56	1	2	59.1	2



❄ = Fridge/freezer space

Our floor plans are provided for illustrative purposes only. For specific apartment dimensions please check the individual apartment sizes with the Springfields Team.

emh care & support  
Part of emh group

# SPRINGFIELDS

APARTMENT TYPE 10:

---

TULIP / 1

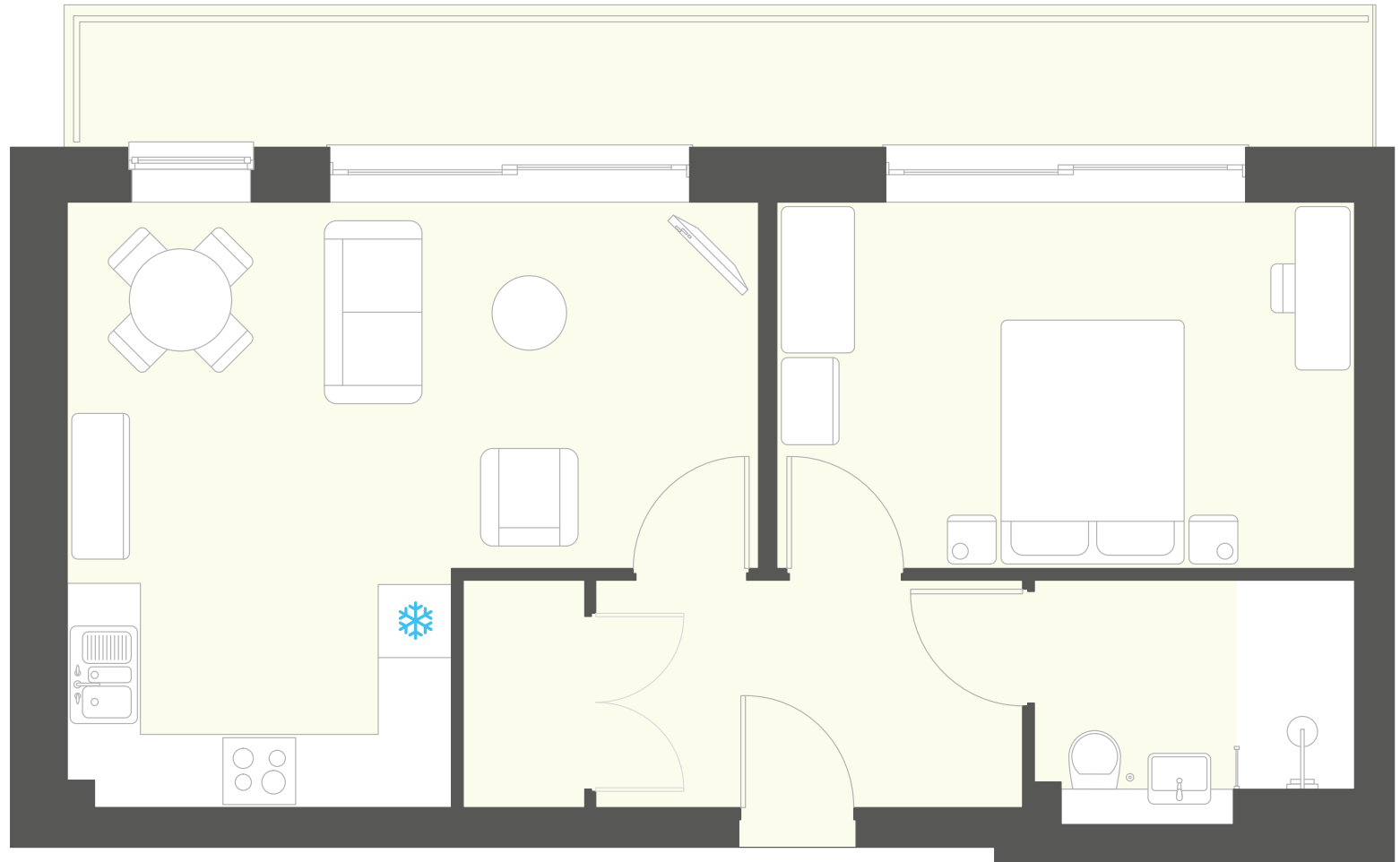
---



APARTMENT TYPE 10:

# TULIP / 1

Apartment	No. of bedrooms	Floor/Story	Area m <sup>2</sup>	Kitchen finish
60	1	3	52.8	1



 = Fridge/freezer space

Our floor plans are provided for illustrative purposes only. For specific apartment dimensions please check the individual apartment sizes with the Springfields Team.



emh care & support  
Part of emh group

# SPRINGFIELDS

APARTMENT TYPE 10:

---

TULIP / 2

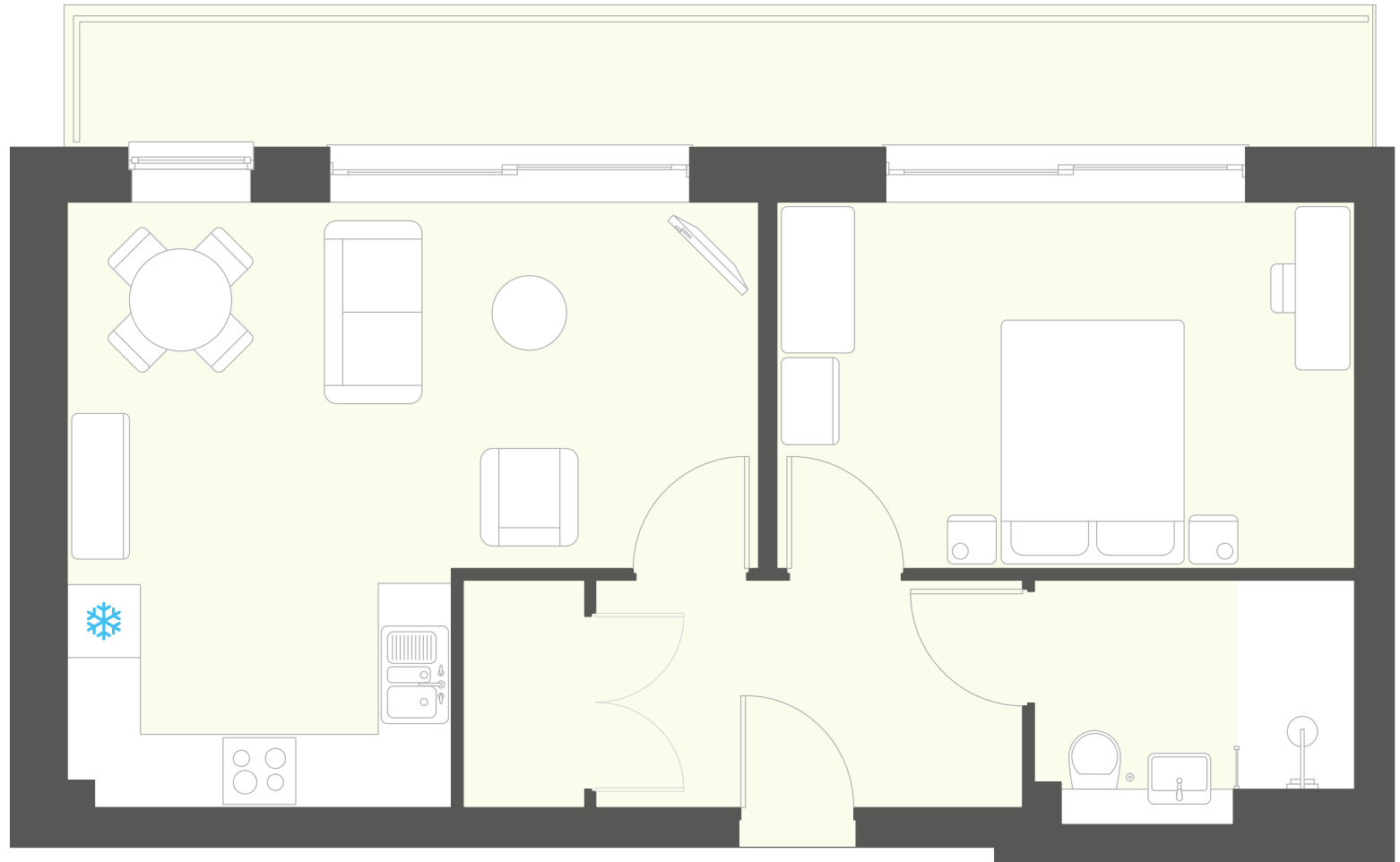
---



APARTMENT TYPE 10:

# TULIP / 2

Apartment	No. of bedrooms	Floor/Story	Area m <sup>2</sup>	Kitchen finish
61	1	3	52.8	2
63	1	3	52.7	1



 = Fridge/freezer space

Our floor plans are provided for illustrative purposes only. For specific apartment dimensions please check the individual apartment sizes with the Springfields Team.

emh care & support  
Part of emh group

# SPRINGFIELDS

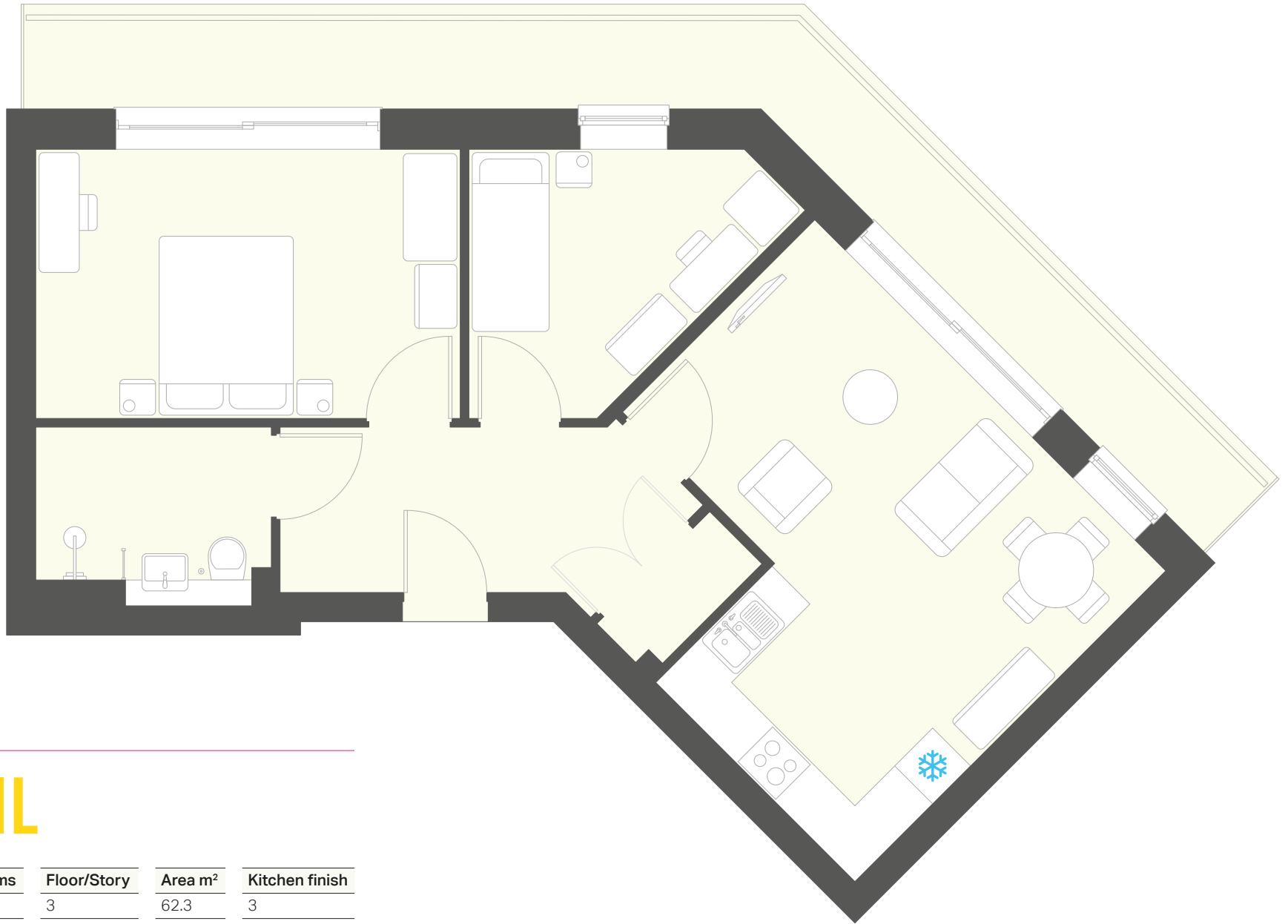
APARTMENT TYPE 11:

---

**DAFFODIL**

---





APARTMENT TYPE 11:

# DAFFODIL

Apartment	No. of bedrooms	Floor/Story	Area m <sup>2</sup>	Kitchen finish
62	2	3	62.3	3

 = Fridge/freezer space

Our floor plans are provided for illustrative purposes only. For specific apartment dimensions please check the individual apartment sizes with the Springfields Team.